



# Sudden Cardiac Death Organising Family Services

British Heart Foundation  
Arrhythmia Specialist Nurse  
Sister Catherine Owen  
University Hospital of Wales



## Traditional Services → 2006

**Referral of Relative (GP)** → **6 months**

**Arrhythmia Clinic (ECG, ECHO)** → **6 months**

**Copy of death certificate**

**Screening tests (24 hr tape, epinephrine, ajmaline test)** → **3 months**

**Family members offered screening/Medical Genetics**



## Setting up an Adult Clinical Service for Inherited Channelopathies and Families of Sudden Cardiac Death Victims

# N.S.F. Coronary Heart Disease, Chapter 8 Cardiac Arrhythmias.

BHF Funding  
Arrhythmia Specialist Nurse  
Appointed September 2006

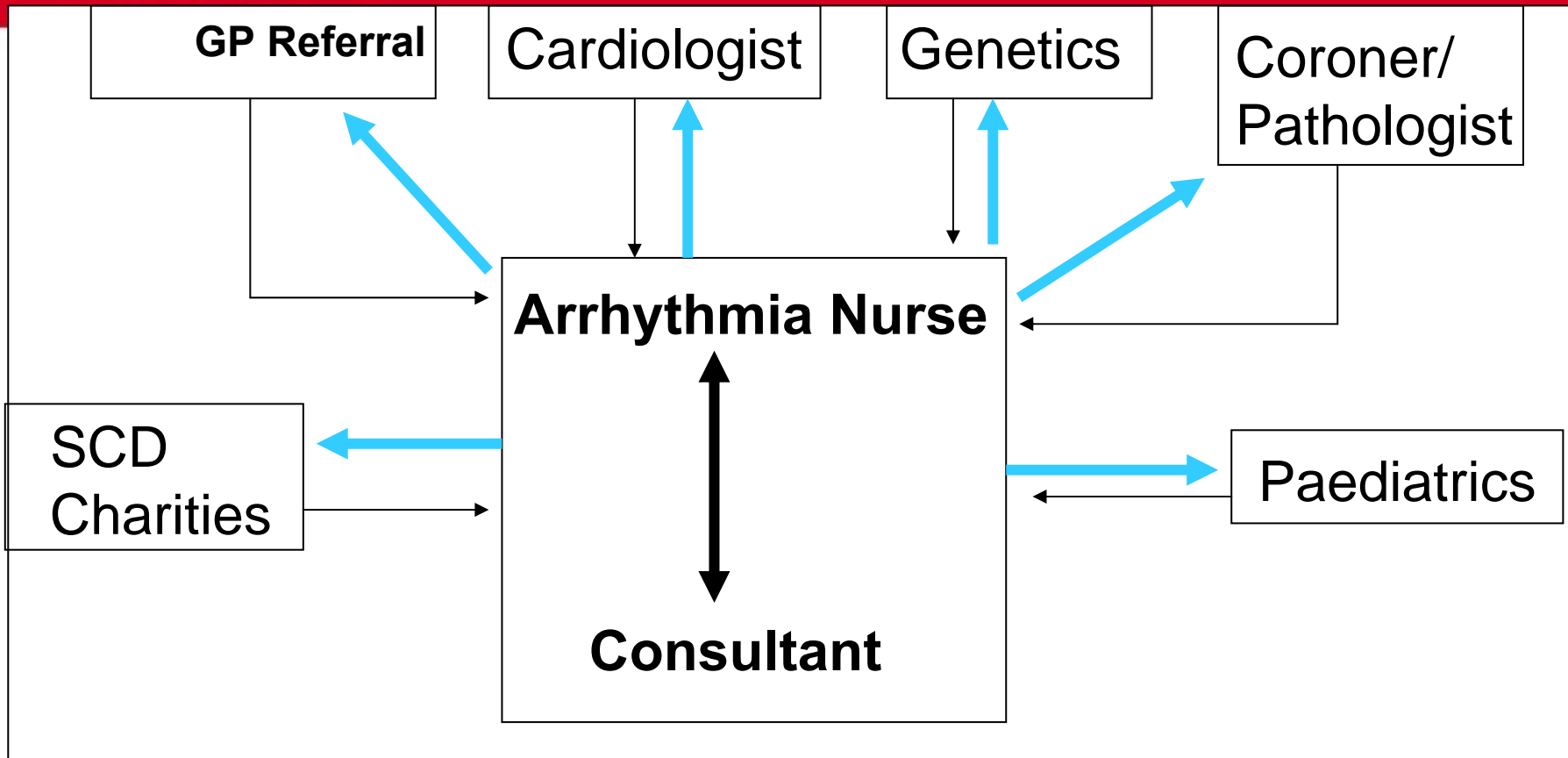


## AIMS OF SERVICE

- PROVIDE A SCREENING SERVICE FOR FAMILIES WITH A SUSPECTED INHERITED CARDIAC CONDITION.
- RAPID ACCESS
- TO PREVENT FURTHER TRAJEDIES
- TO STREAMLINE AND COORDINATE EXISTING SERVICE.



# Nurse Coordinated, Consultant Led Rapid Access Service





SUDDEN UNEXPLAINED DEATH  
SYNDROME  
LONG QT  
BRUGADA  
ARRHYTHMOGENIC RIGHT  
VENTRICULAR CARDIOMYOPATHY  
CATECHOLAMINERGIC POLYMORPHIC VT  
(CPVT)





# INFORMATION REQUIRED

POST MORTEM REPORT

FAMILY HISTORY/PEDIGREE

HISTORY OF SYMPTOMS.

ECG

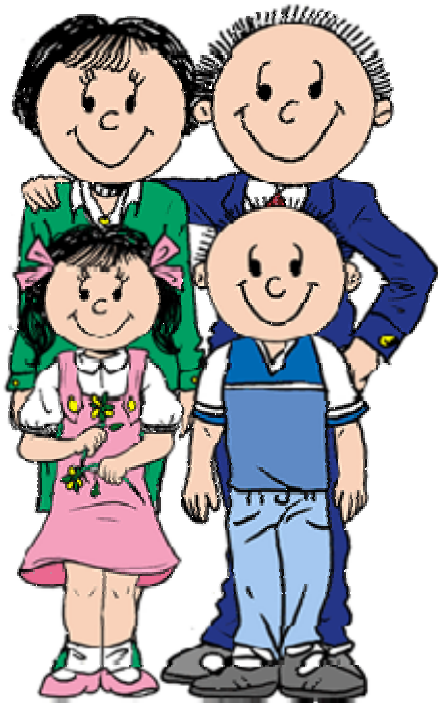
ECHO

24H T

EXERCISE STRESS TEST – IF NO SHD



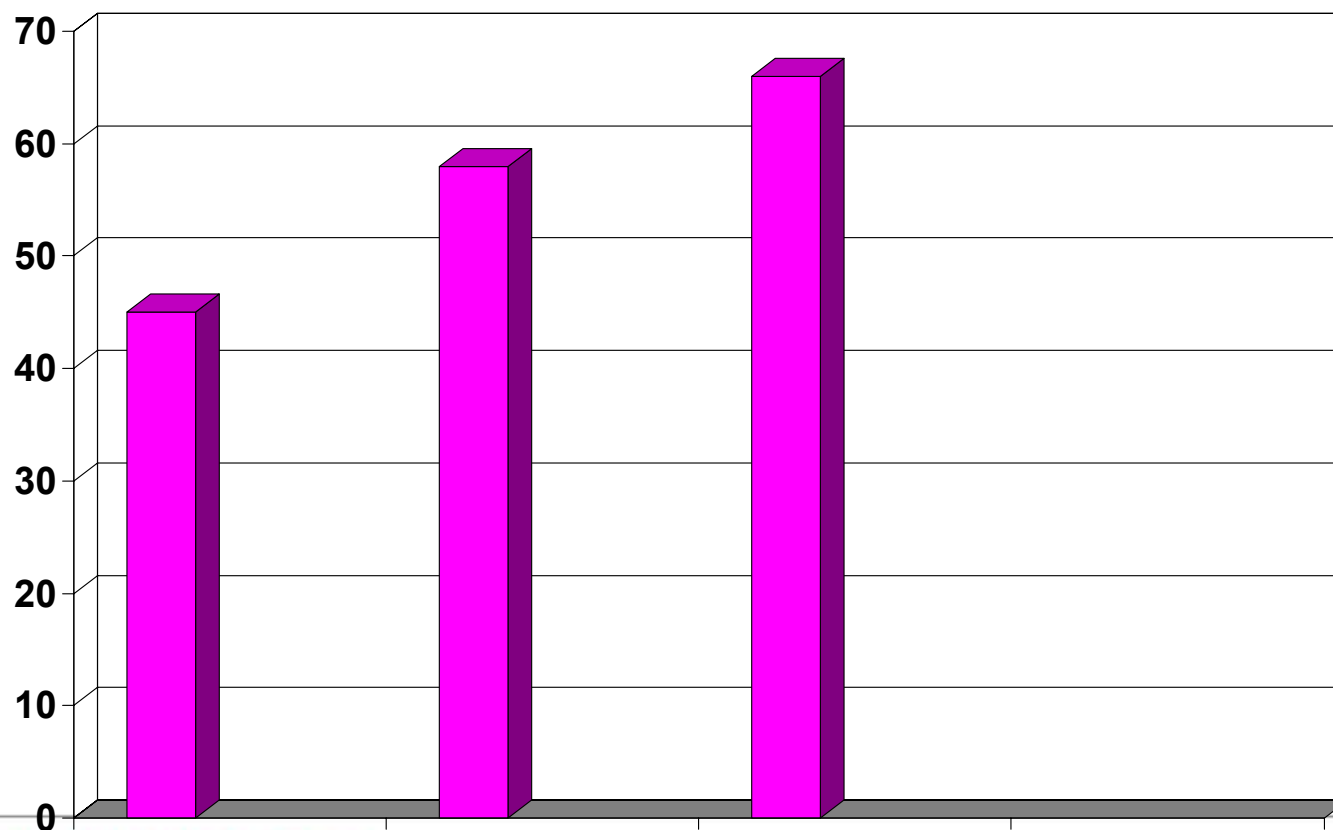
# WHAT DO THE FAMILY NEED



BEATING HEART DISEASE TOGETHER

[bhf.org.uk](http://bhf.org.uk)

# Activity over 3 year Period



# ACTIVITY OVER 2 YR PERIOD

