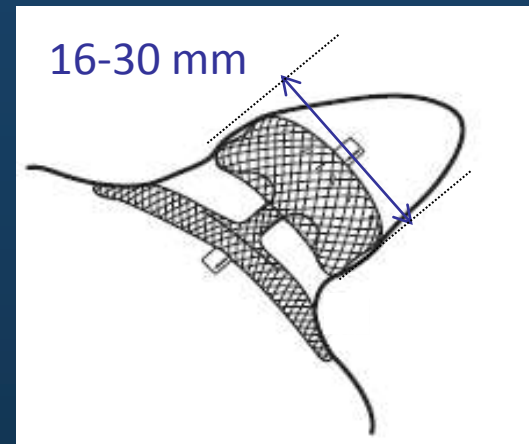
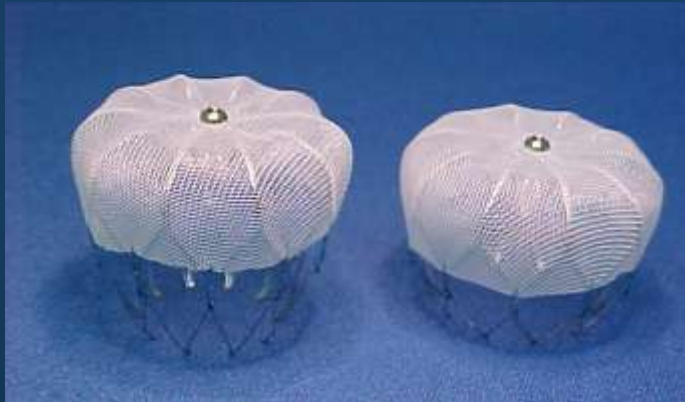


Device based alternative for stroke prophylaxis

if at first you don't succeed, try, try again



Mark Earley
St Bartholomew's Hospital

Disclosures

Atritech/Boston Sci

- Travel to watch cases
- Hospitality
- Conference travel/accommodation

AGA/SJM

- Travel to watch cases
- Conference travel/accommodation
- Honoraria to speak at SJM meeting
- Unrestricted research grant

LAA closure at Barts

- 2 electrophysiology consultants
- GA
- TOE + fluoroscopy guided
- Anticoagulation protocol
 - Warfarin 4 weeks pre, 6 weeks post
 - Heparin intraoperatively (ACT>300s)
 - (*Aspirin/clopidogrel*)
- TOE at 6 weeks

Pt	Age/Se x	CHADS2	CHADS VASc	Indications	Proc time	X-ray time	Comps	Success?
1	69M	1	2	Hg stroke on warfarin	45	7	-	Yes
2	72M	2	4	Unwilling to take warfarin	70	8.5	-	No*
3	74F	1	3	Intolerant of warfarin	60	5.5	-	Yes
4	79F	2	4	Intolerant of warfarin	75	10.4	-	Yes
5	75M	2	3	Bleeding from eye	80	20.6	-	No*
6	74M	1	2	GI bleed on warfarin	115	18.4	Tamp	No
7	69F	2	4	GI bleed on warfarin	80	8.5	ST up	Yes
8	67M	2	3	Hg stroke on warfarin	35	5.1	-	Yes
9	79M	2	3	GI bleed on warfarin	60	4.4	-	Yes
10	72M	1	2	Regular spinal injections	60	10.4	-	Yes
11	65M	1	3	Unwilling to take warfarin			-	Yes
12	82F	2	4	Unwilling to take warfarin			-	No
13	78M	1	2	Unwilling to take warfarin	90	16.5	-	No
14	70M	3	4	Hg stroke	80	10.4	-	Yes

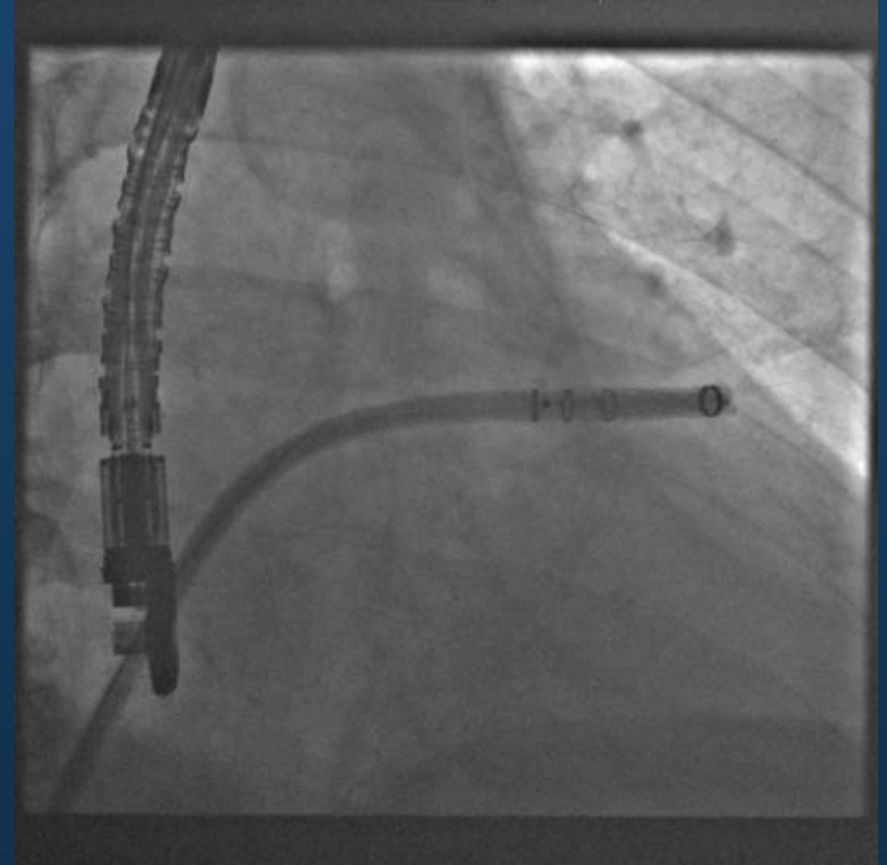
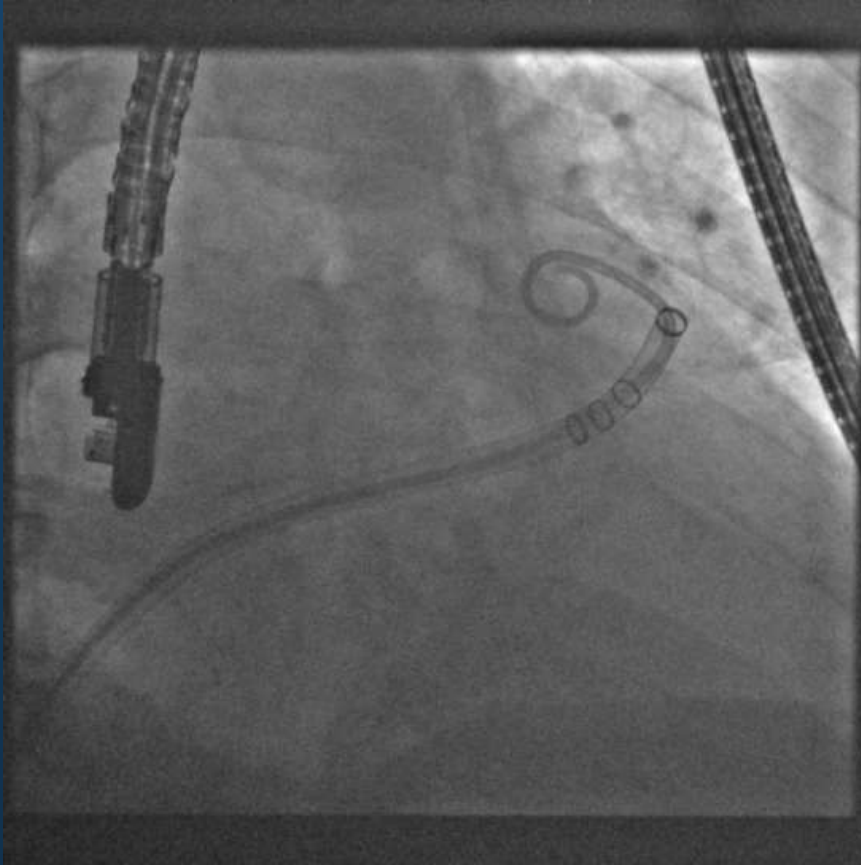
Case

- 75 year old man – asymptomatic permanent AF
- CHADSVaSc = 4
- Rx: warfarin, aspirin 75, diltiazem, atorvastatin, ramipril, allopurinol
- Recurrent painful bleeding into eye

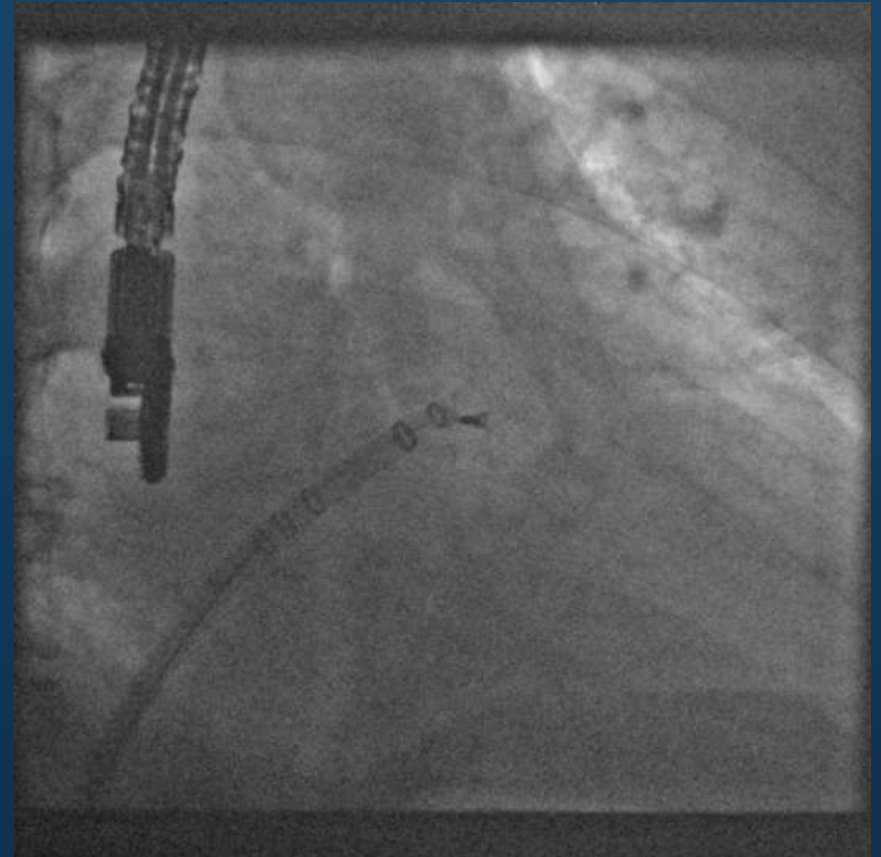
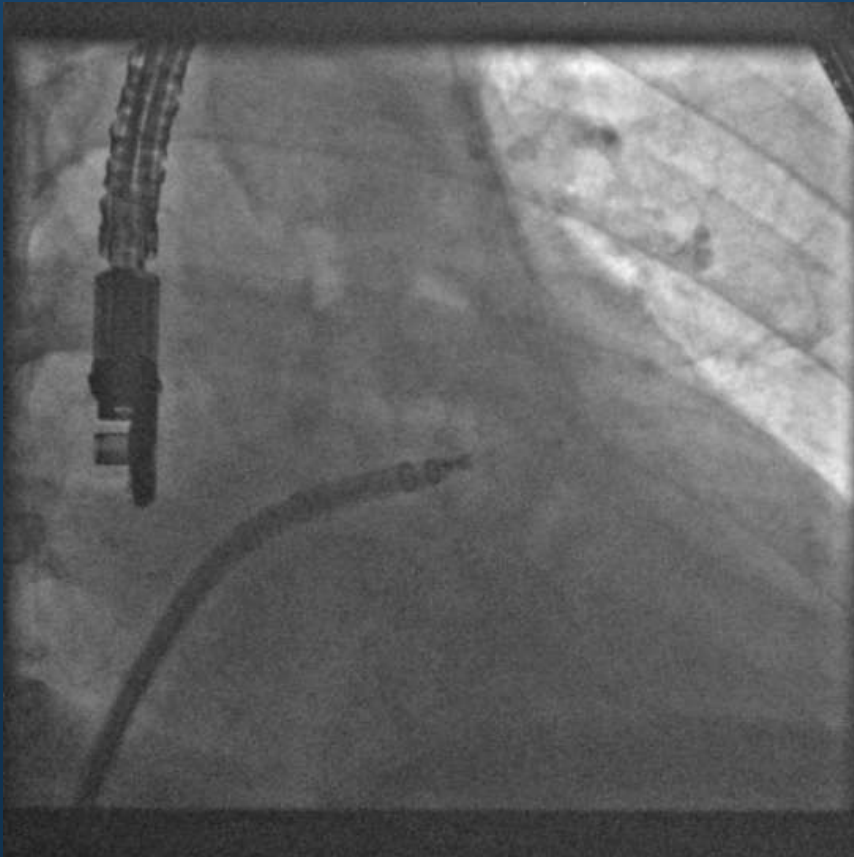
Initial TOE



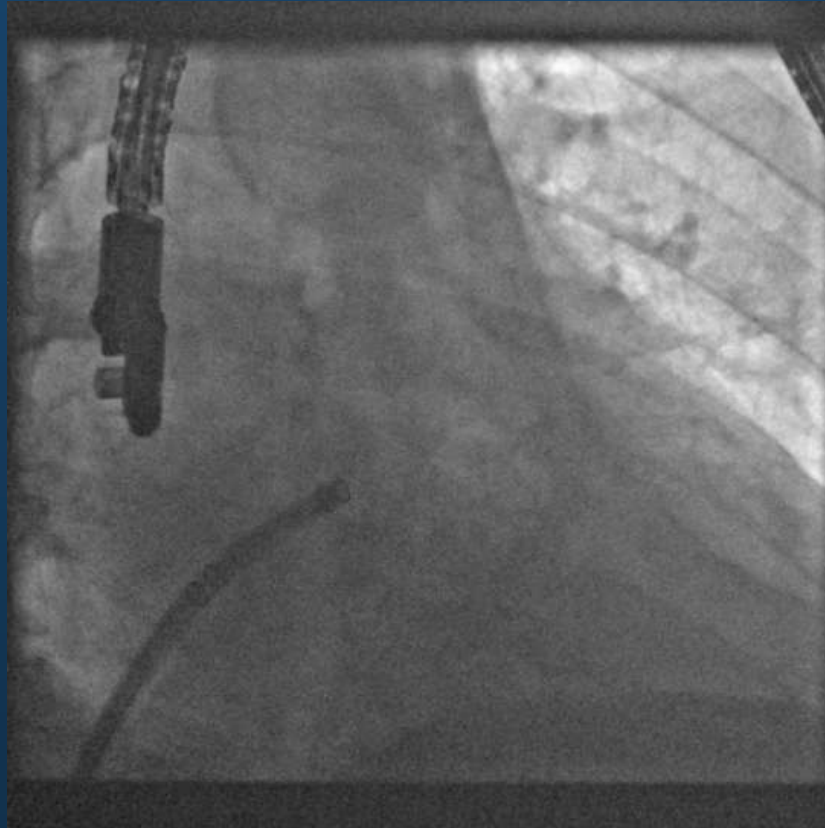
Initial fluoroscopy



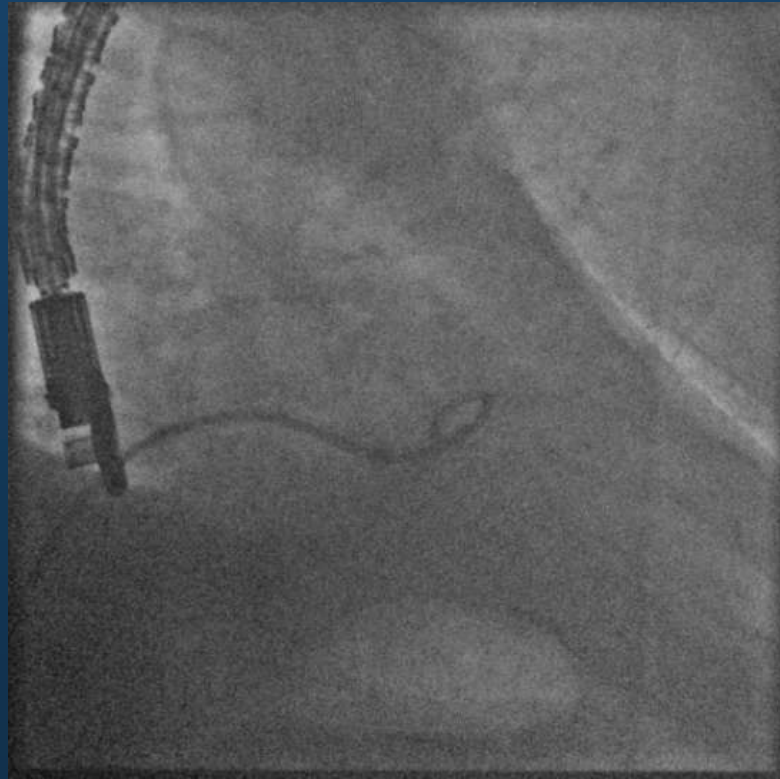
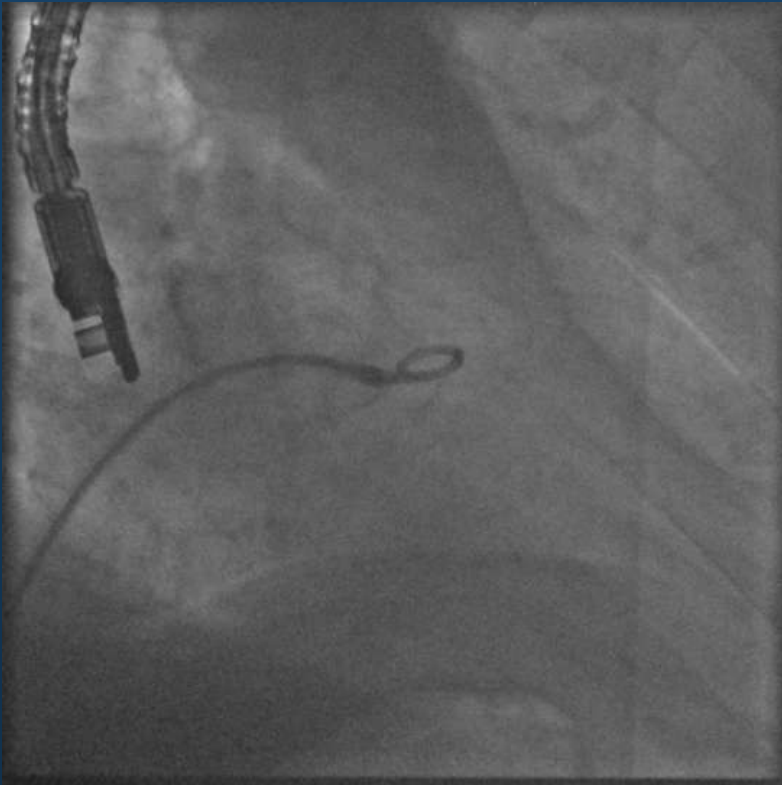
Watchman delivery



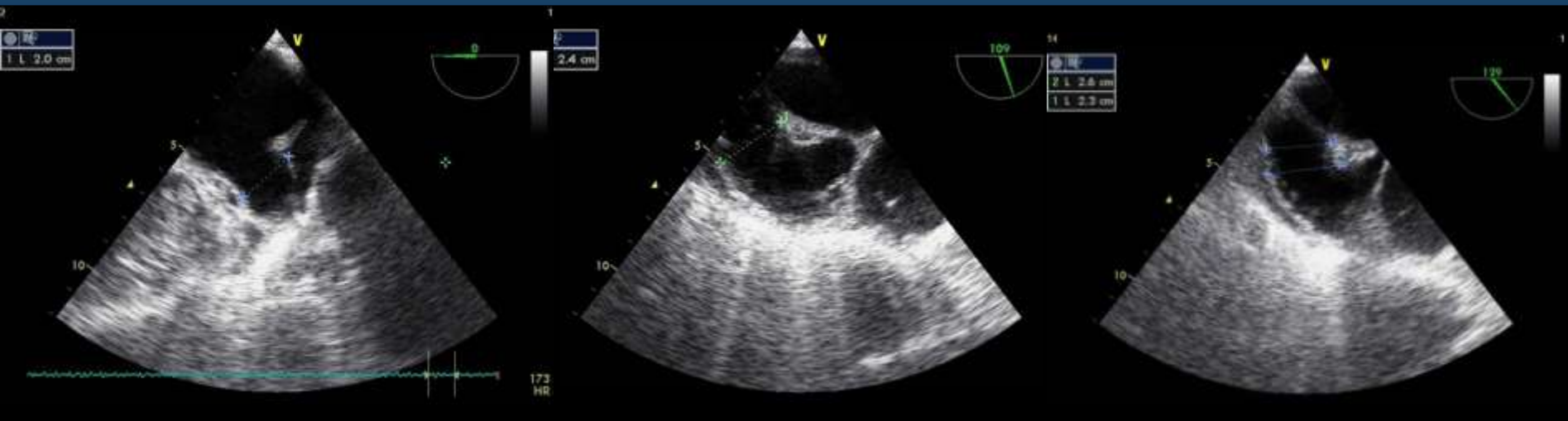
Watchman recovered



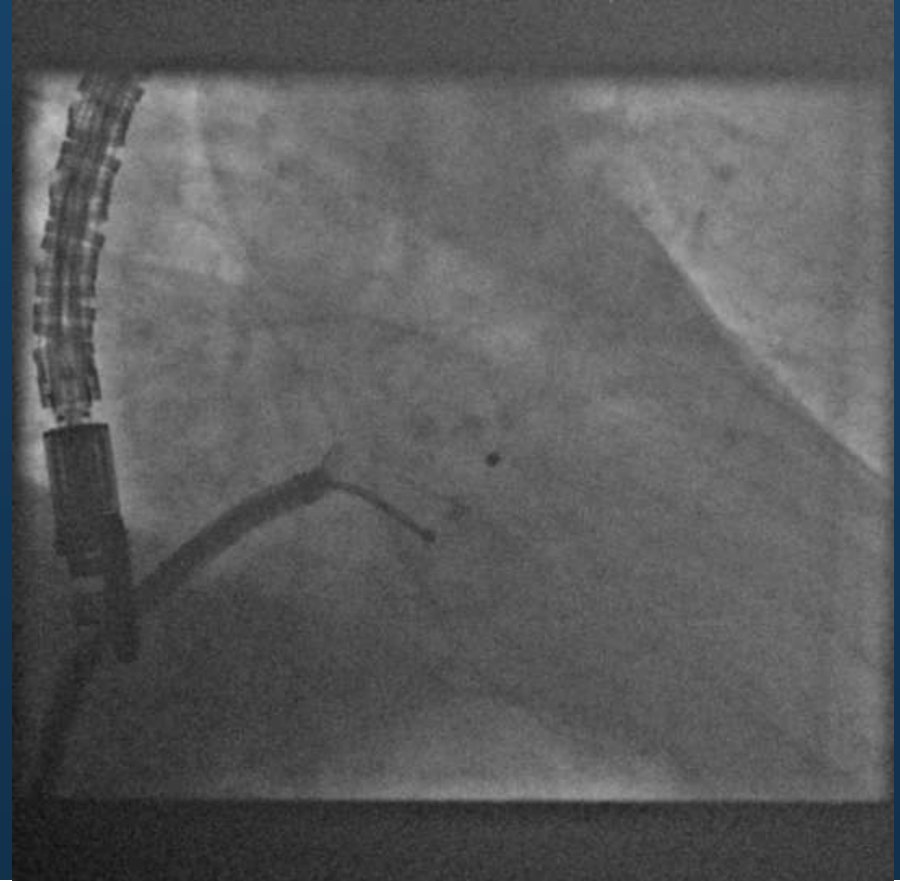
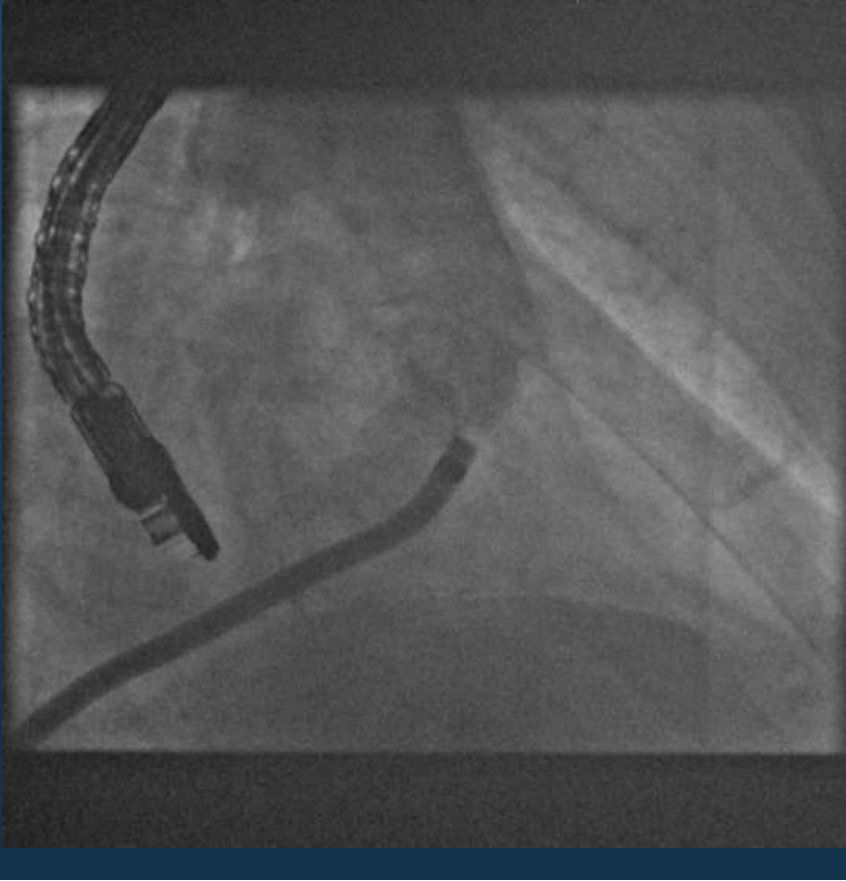
ACP – initial images



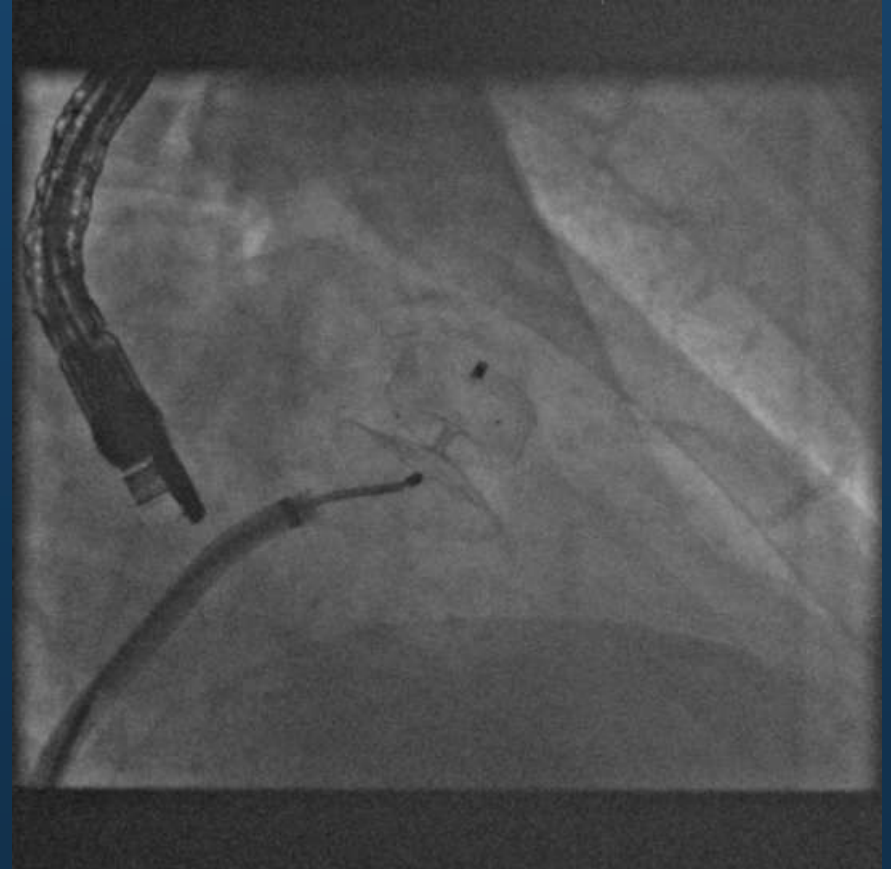
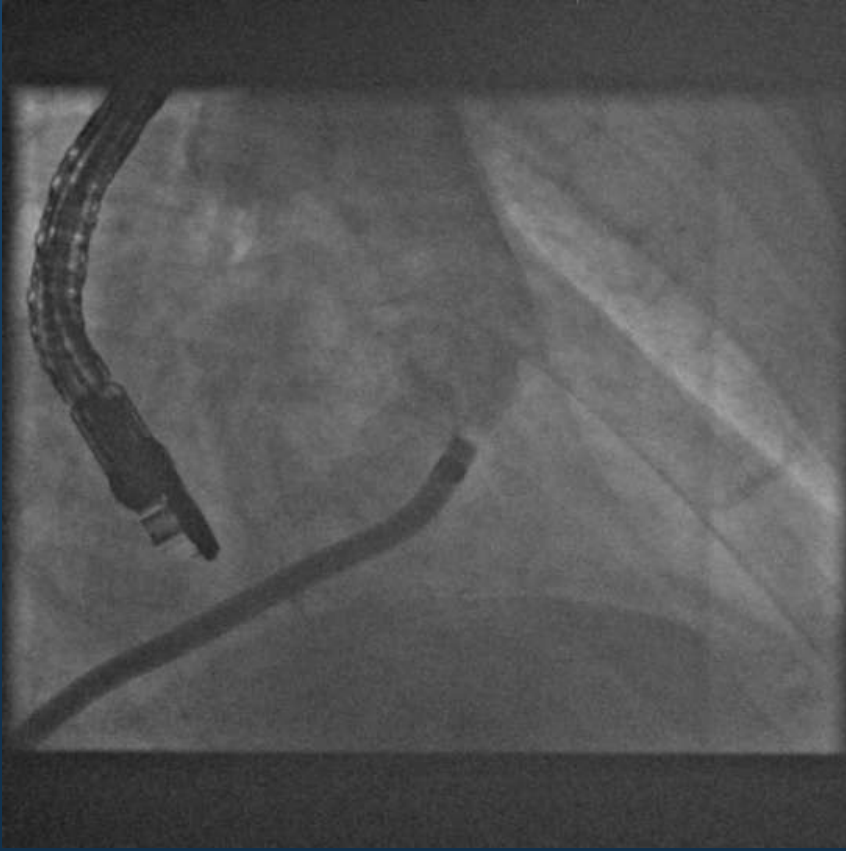
TOE measurements



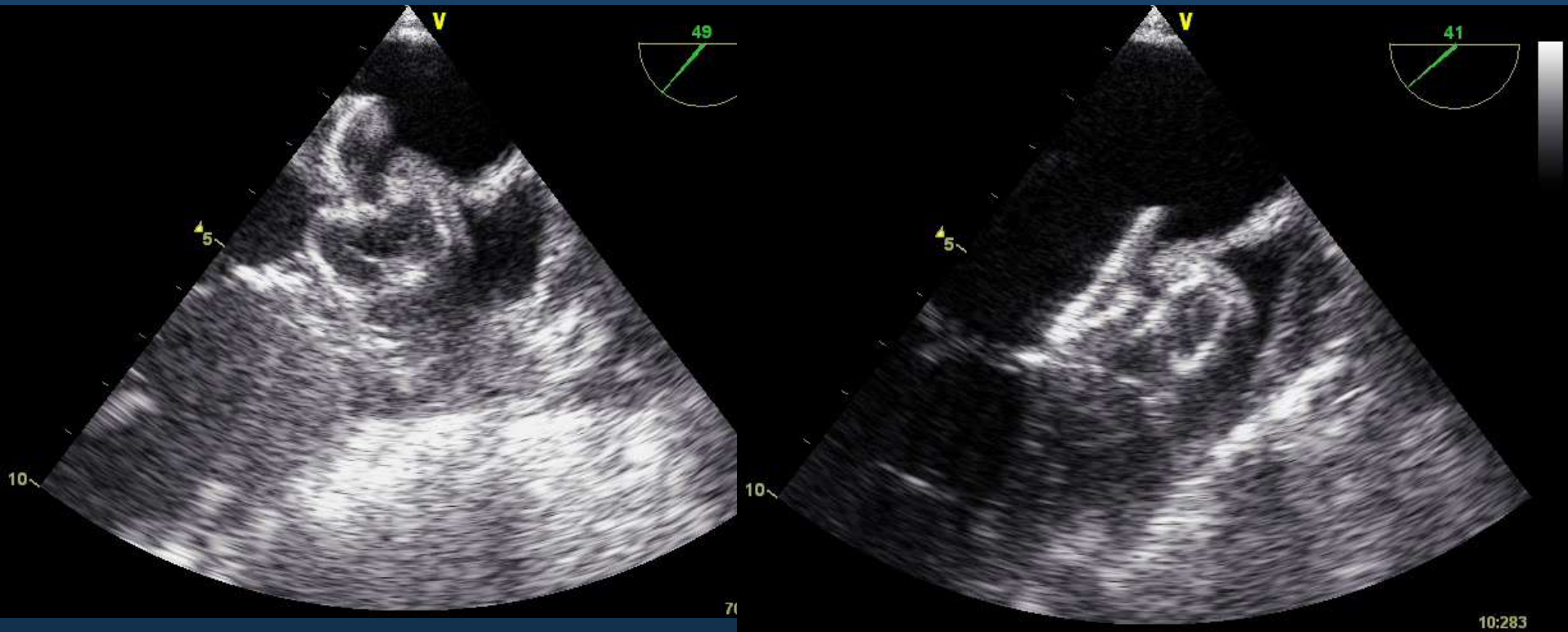
Deployment



Deployment



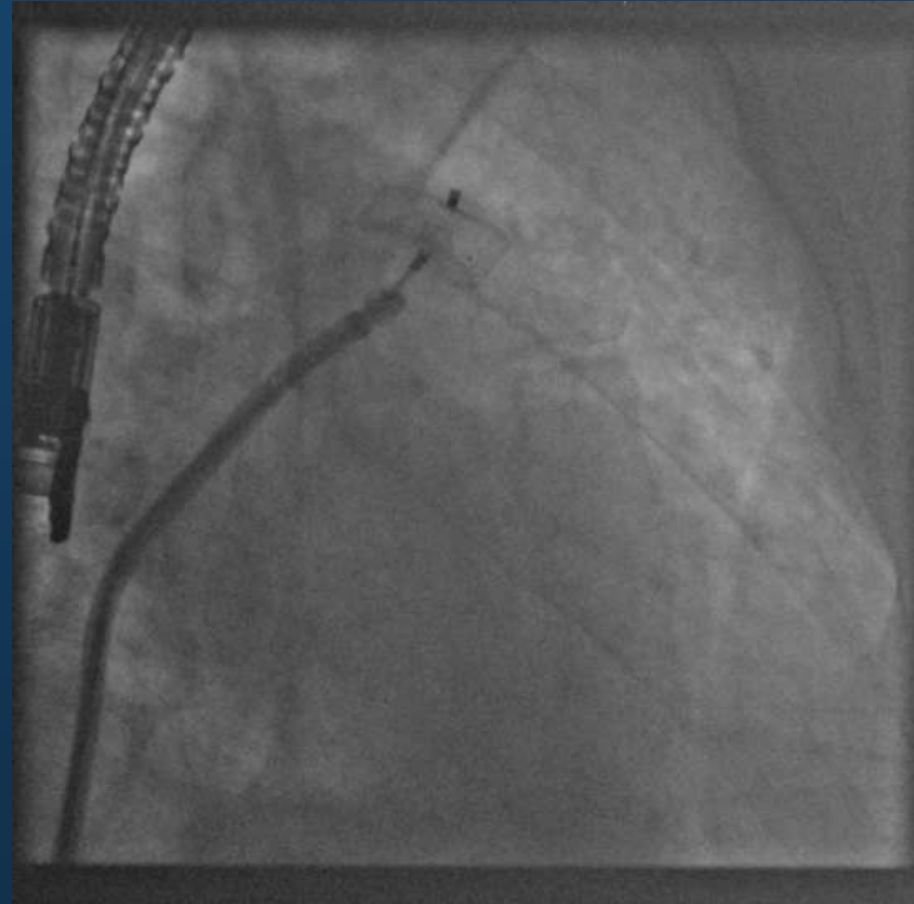
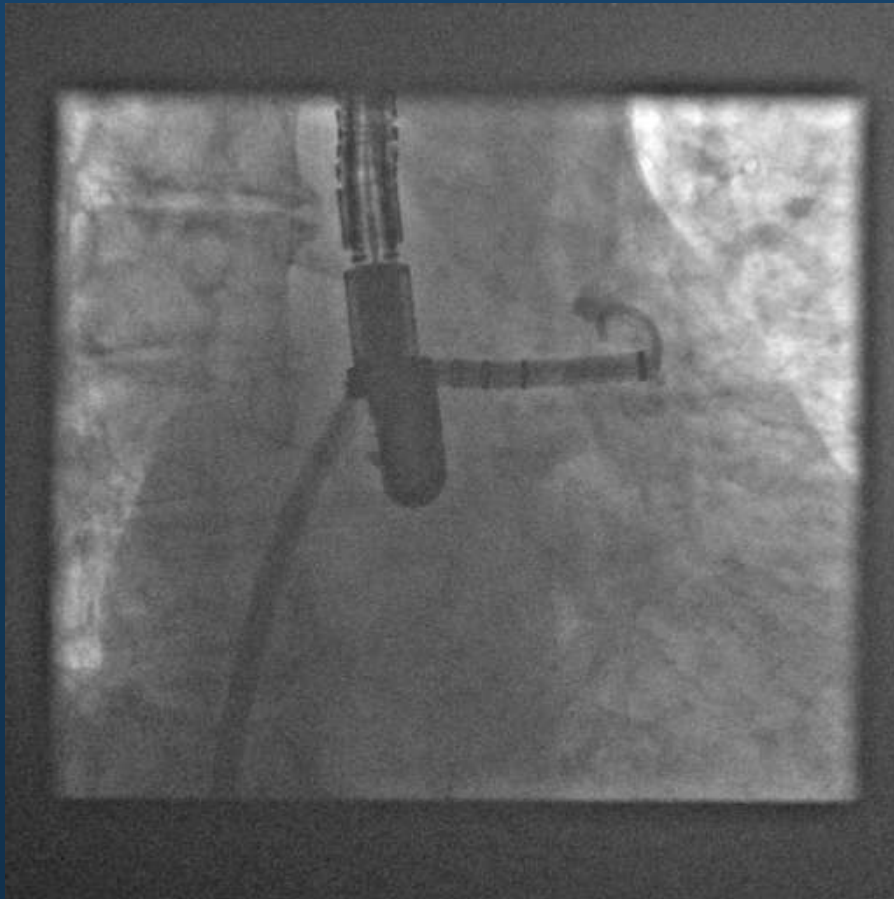
Deployment



TOE at 6 weeks



Failed cases



Lessons

- Fluoroscopy > echocardiography guidance
- Watchman & ACP – different characteristics
- Choose device specific to patient
- Anatomy crucial – pre-op imaging?
 - TOE
 - CT LA
 - MR

