

# A Difficult ICD Implant

Dr Mark Dayer

Taunton and Somerset NHS Trust

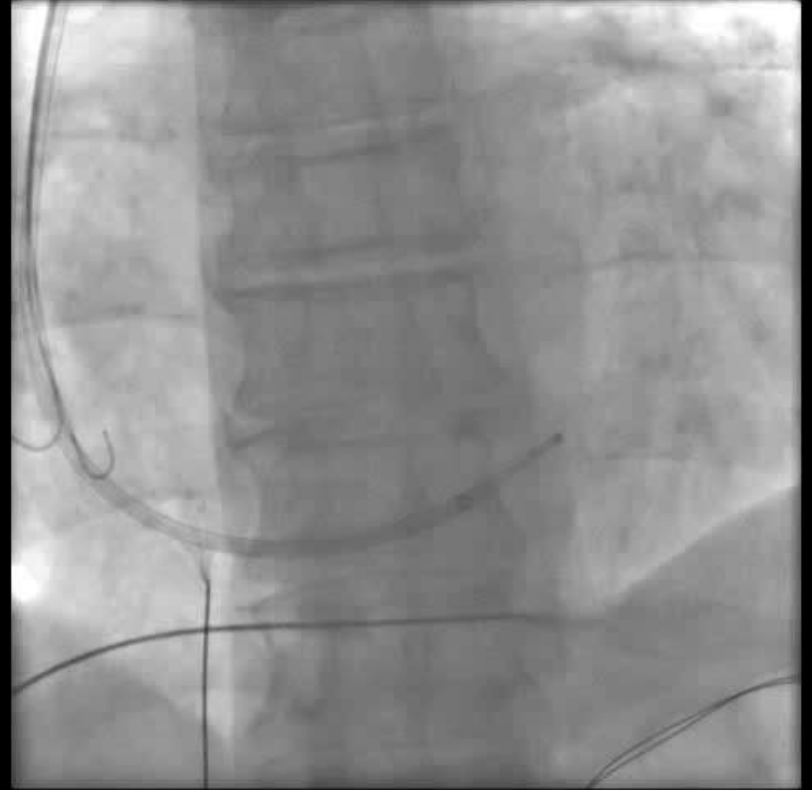
56 year old  
man

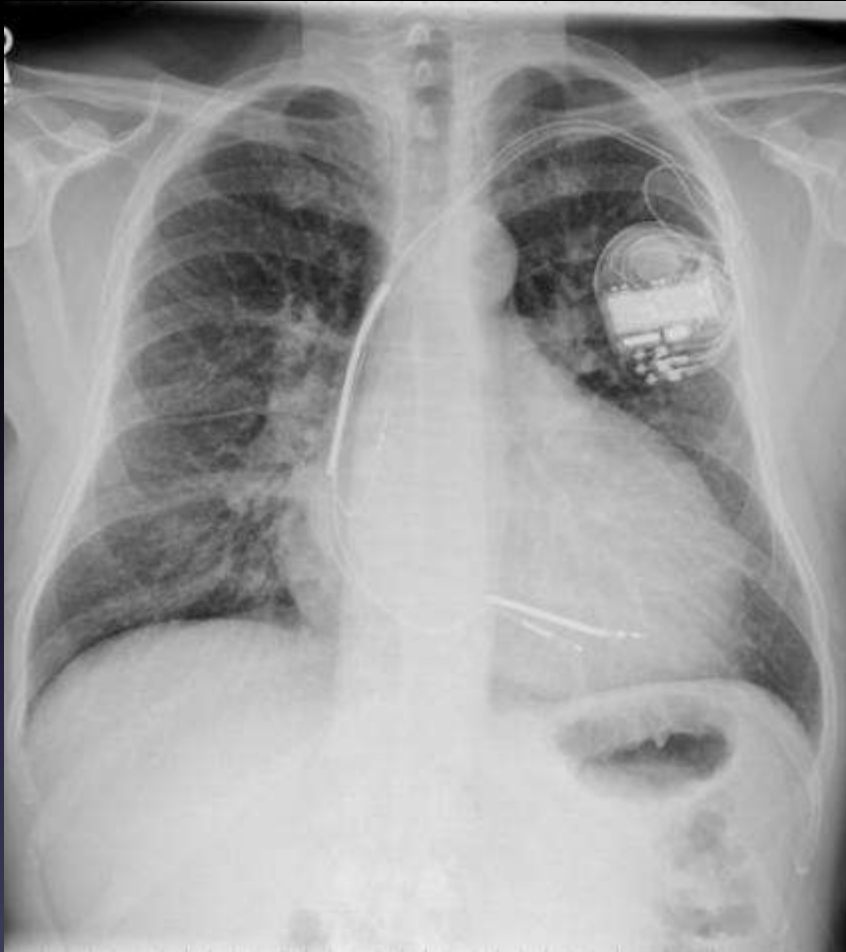
Breathless

Episode of  
syncope

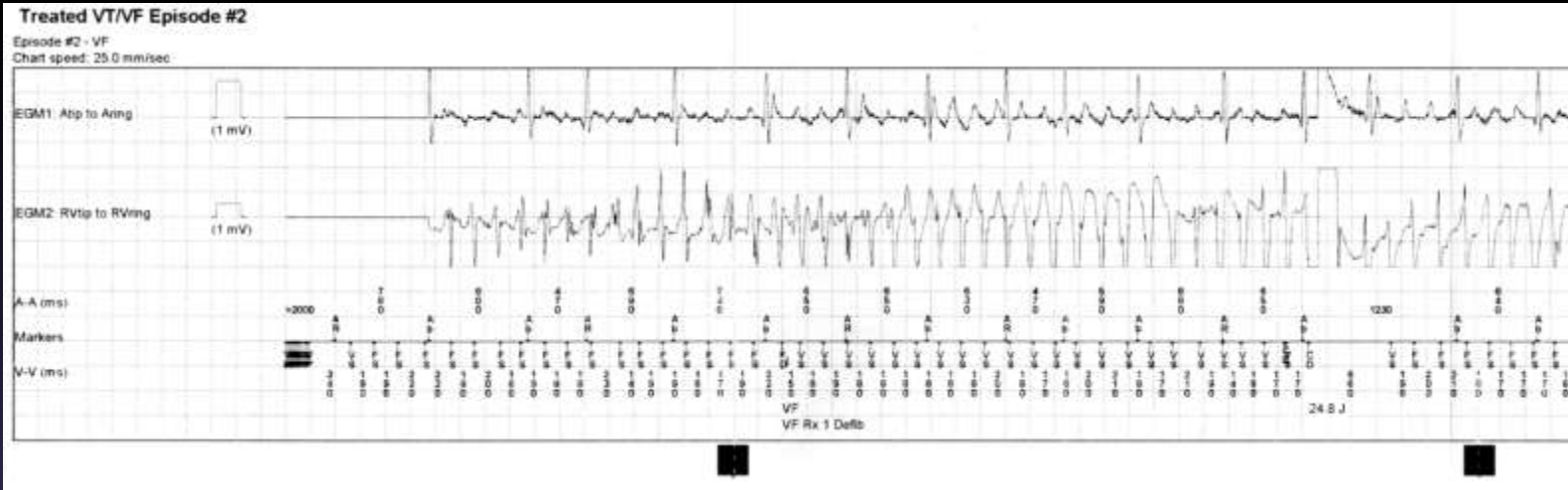
Broad QRS  
Complex



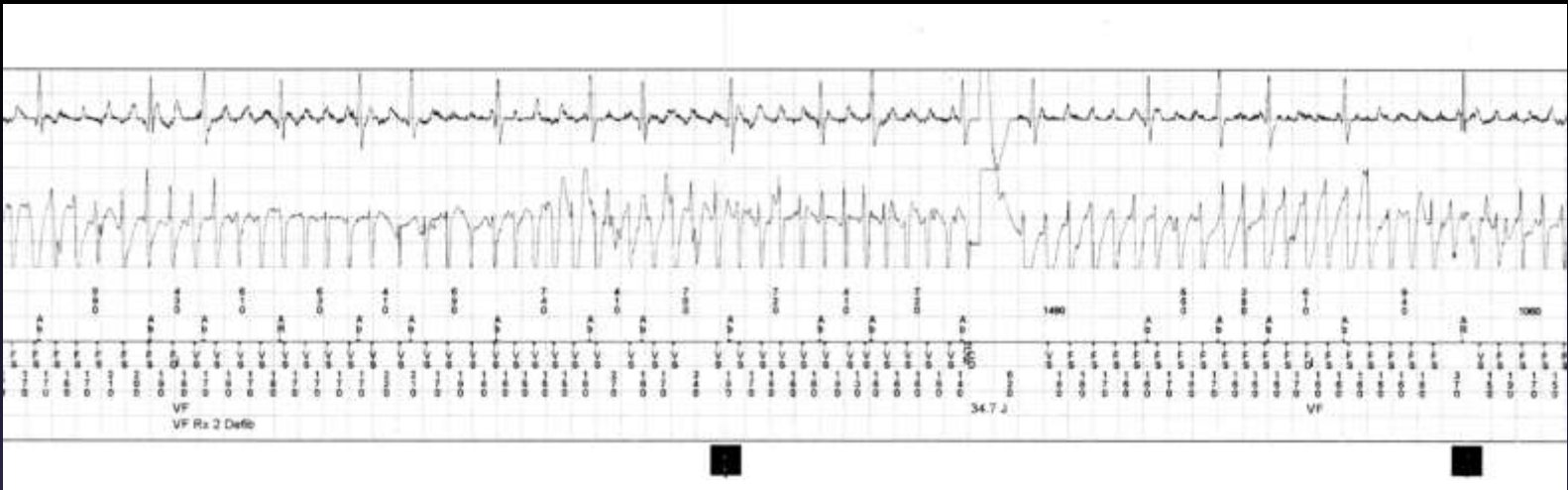




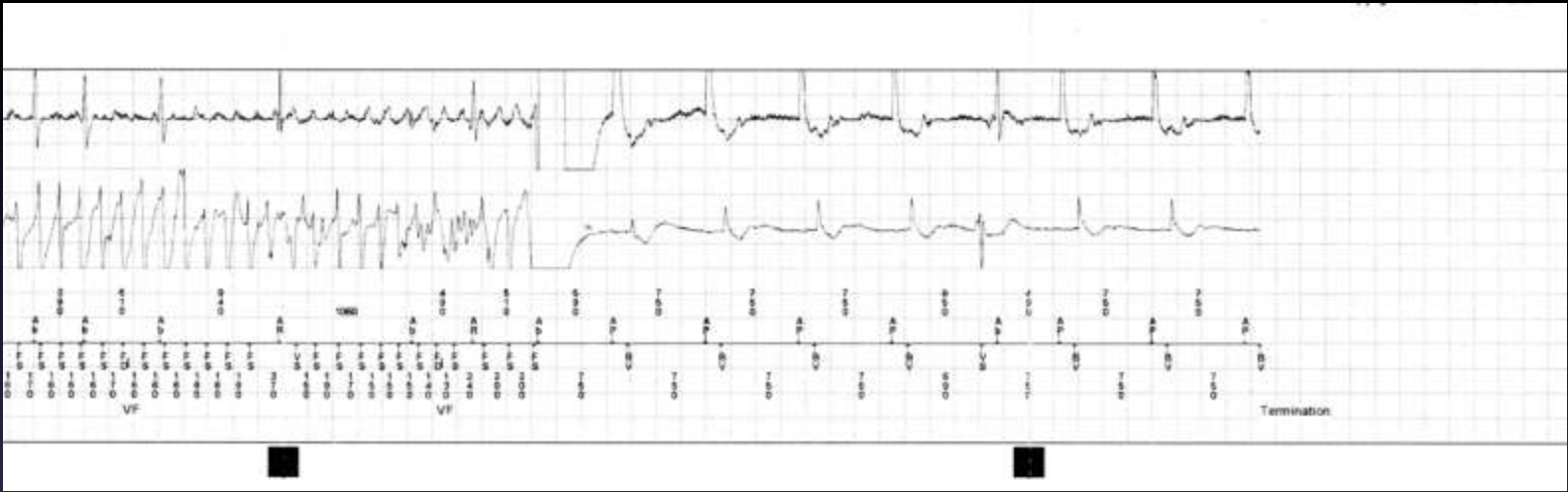
# DFT Test



# DFT Test

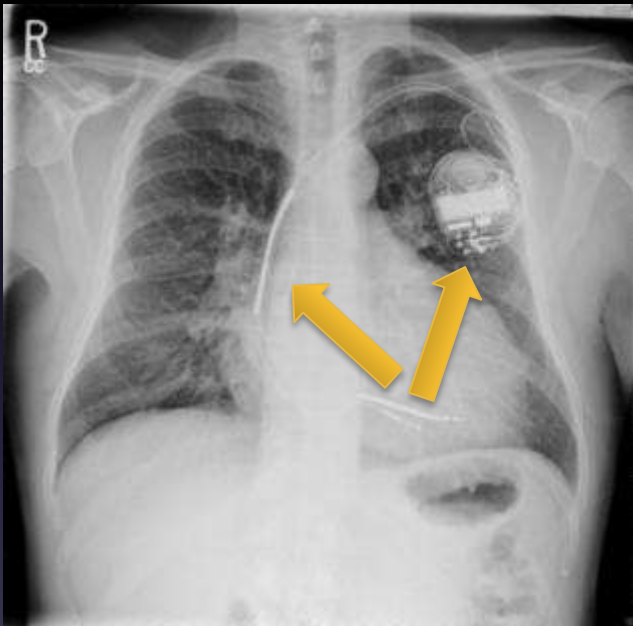


# DFT Test



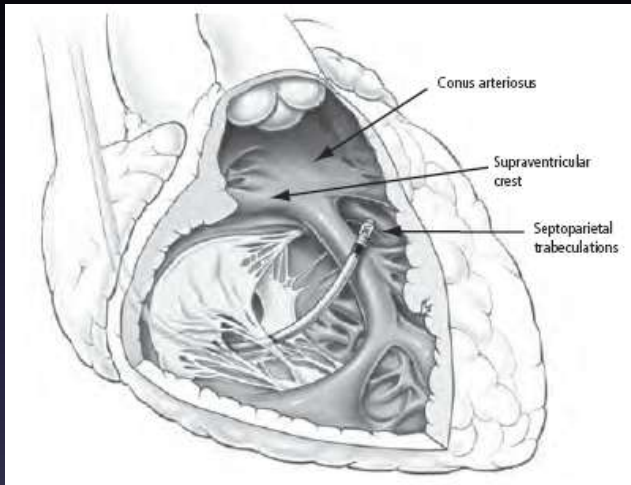
## Options

- Change the shock
  - Reverse polarity, remove SVC coil, remove can, change waveform



## Options

- Change the shock
  - Reverse polarity, remove SVC coil, remove can, change waveform
- Reposition RV lead?
  - Mollerus et al. 2008 – Higher threshold in RVOT



<http://www.touchcardiology.com/img/Image/hill.gif>

## Options



<http://www.drugs.com/imprints/93-63-8424.html>



<http://www.drugs.com/imprints/taro-56-10257.html>

- Change the shock
  - Reverse polarity, remove SVC coil, remove can, change waveform
- Reposition RV lead?
  - Mollerus et al. 2008 – Higher threshold in RVOT
- Drugs?
  - Add sotalol, stop amiodarone
  - Hohnloser et al. 2006 – Minimal impact

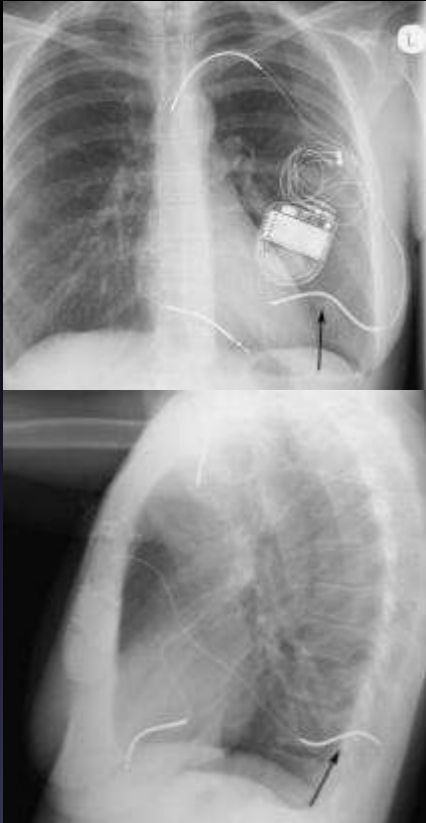
## Options



<http://www.innovationscrm.com/showarticle.aspx?id=99>

- Change the shock
  - Reverse polarity, remove SVC coil, remove can, change waveform
- Reposition RV lead?
  - Mollerus et al. 2008 – Higher threshold in RVOT
- Drugs?
  - Add sotalol, stop amiodarone
  - Hohnloser et al. 2006 – Minimal impact
- Subcut array?
  - Verma et al. 2010 – Successful

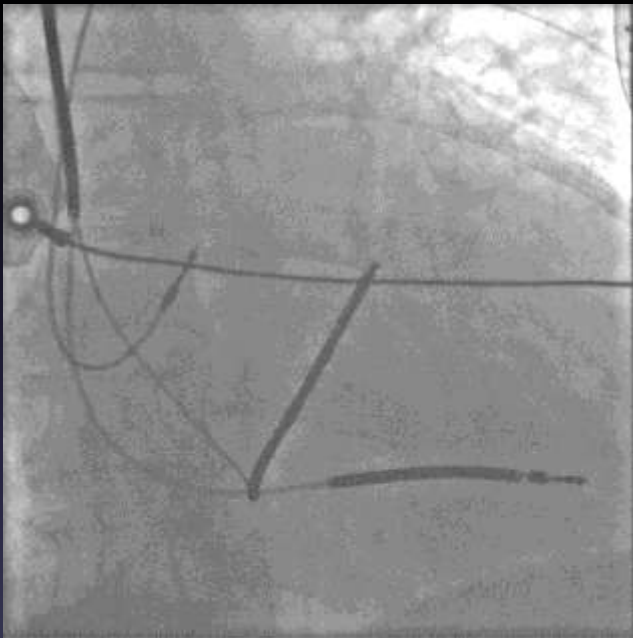
## Options



<http://europace.oxfordjournals.org/content/early/2009/01/14/europace.eun382/F2.large.jpg>

- Change the shock
  - Reverse polarity, remove SVC coil, remove can, change waveform
- Reposition RV lead?
  - Mollerus et al. 2008 – Higher threshold in RVOT
- Drugs?
  - Add sotalol, stop amiodarone
  - Hohnloser et al. 2006 – Minimal impact
- Subcut array?
  - Verma et al. 2010 – Successful
- Lead elsewhere?
  - Version of s/cut array – Juchem et al. 2009

## Options



<http://casereports.bmj.com/content/2009/bcr.2006.104125.full>

- Change the shock
  - Reverse polarity, remove SVC coil, remove can, change waveform
- Reposition RV lead?
  - Mollerus et al. 2008 – Higher threshold in RVOT
- Drugs?
  - Add sotalol, stop amiodarone
  - Hohnloser et al. 2006 – Minimal impact
- Subcut array?
  - Verma et al. 2010 – Successful
- Lead elsewhere?
  - Version of s/cut array – Juchem et al. 2009
  - Coronary sinus – Saravanan et al. 2007

## Options

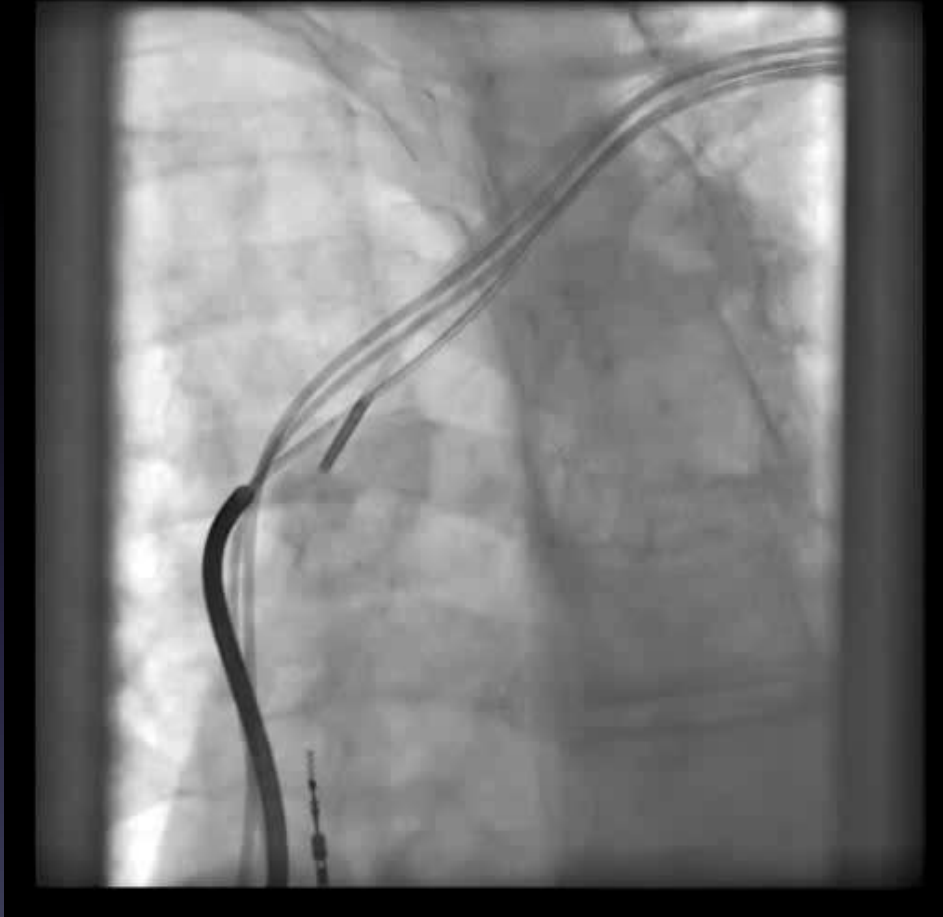


<http://www.ipej.org/1001/kommuri.htm>

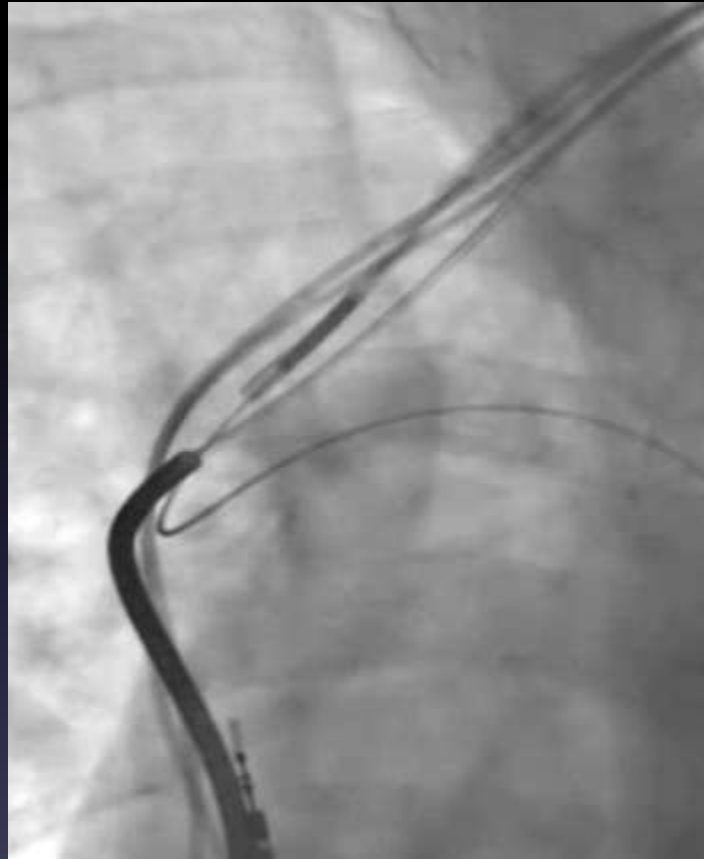
- Change the shock
  - Reverse polarity, remove SVC coil, remove can, change waveform
- Reposition RV lead?
  - Mollerus et al. 2008 – Higher threshold in RVOT
- Drugs?
  - Add sotalol, stop amiodarone
  - Hohnloser et al. 2006 – Minimal impact
- Subcut array?
  - Verma et al. 2010 – Successful
- Lead elsewhere?
  - Version of s/cut array – Juchem et al. 2009
  - Coronary sinus – Saravanan et al. 2007
  - Azygous vein – Cesario et al. 2004



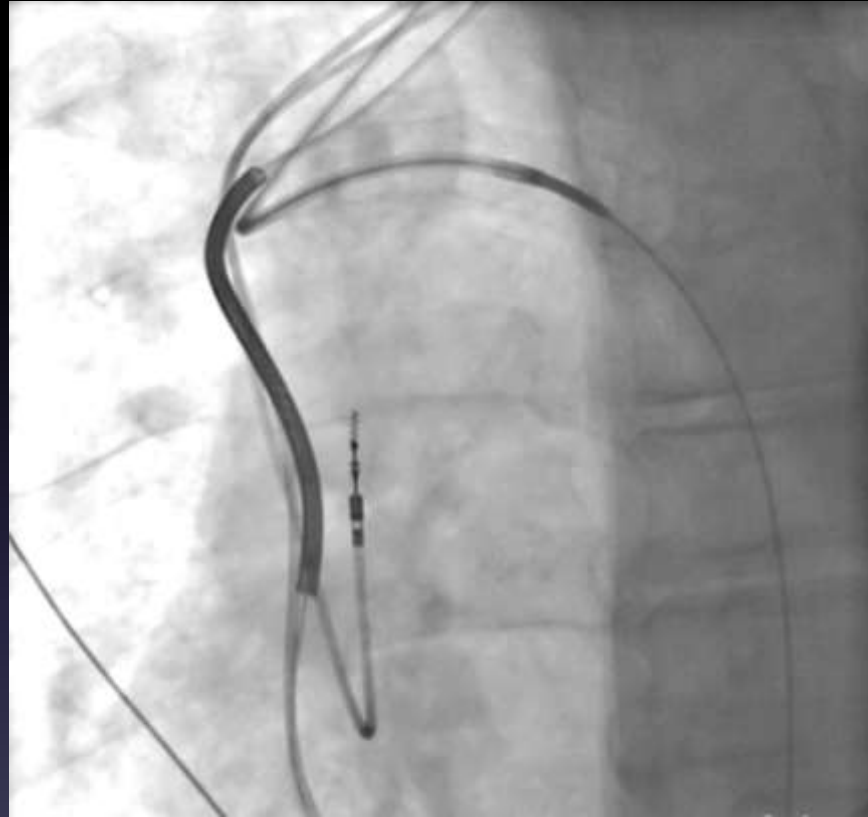
# 1. Attain Select II 90° subselection catheter via Deflectable Attain



## 2. Introduce Terumo wire



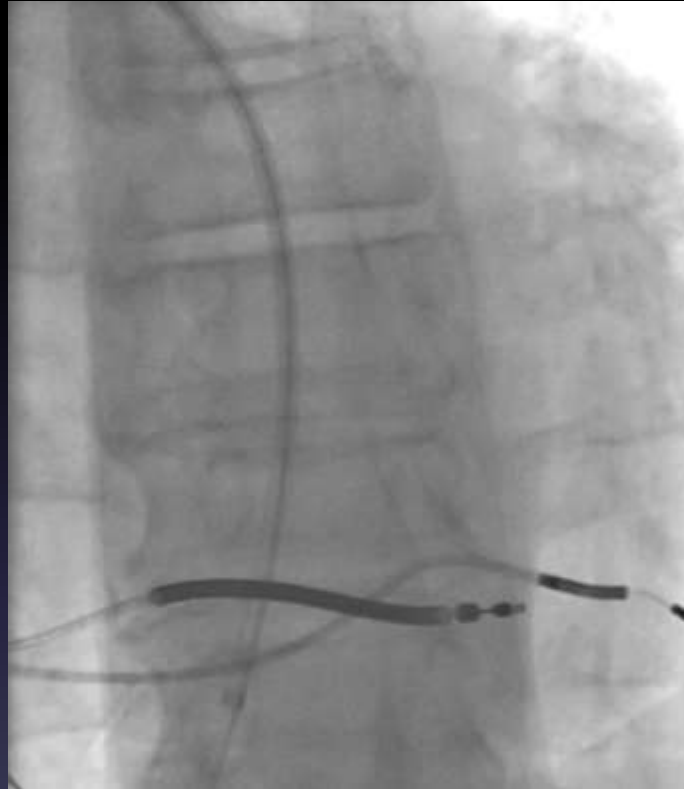
### 3. Advance catheters



## 4. Check position



5. Advance catheters further and remove subselection catheter



## 6. Insert lead

