

Advanced Electrophysiology

Advanced SVT Diagnostics - how to
figure out the difficult case

His synchronous PVCs

Neil Davidson

University Hospital of South Manchester

NHS Foundation Trust



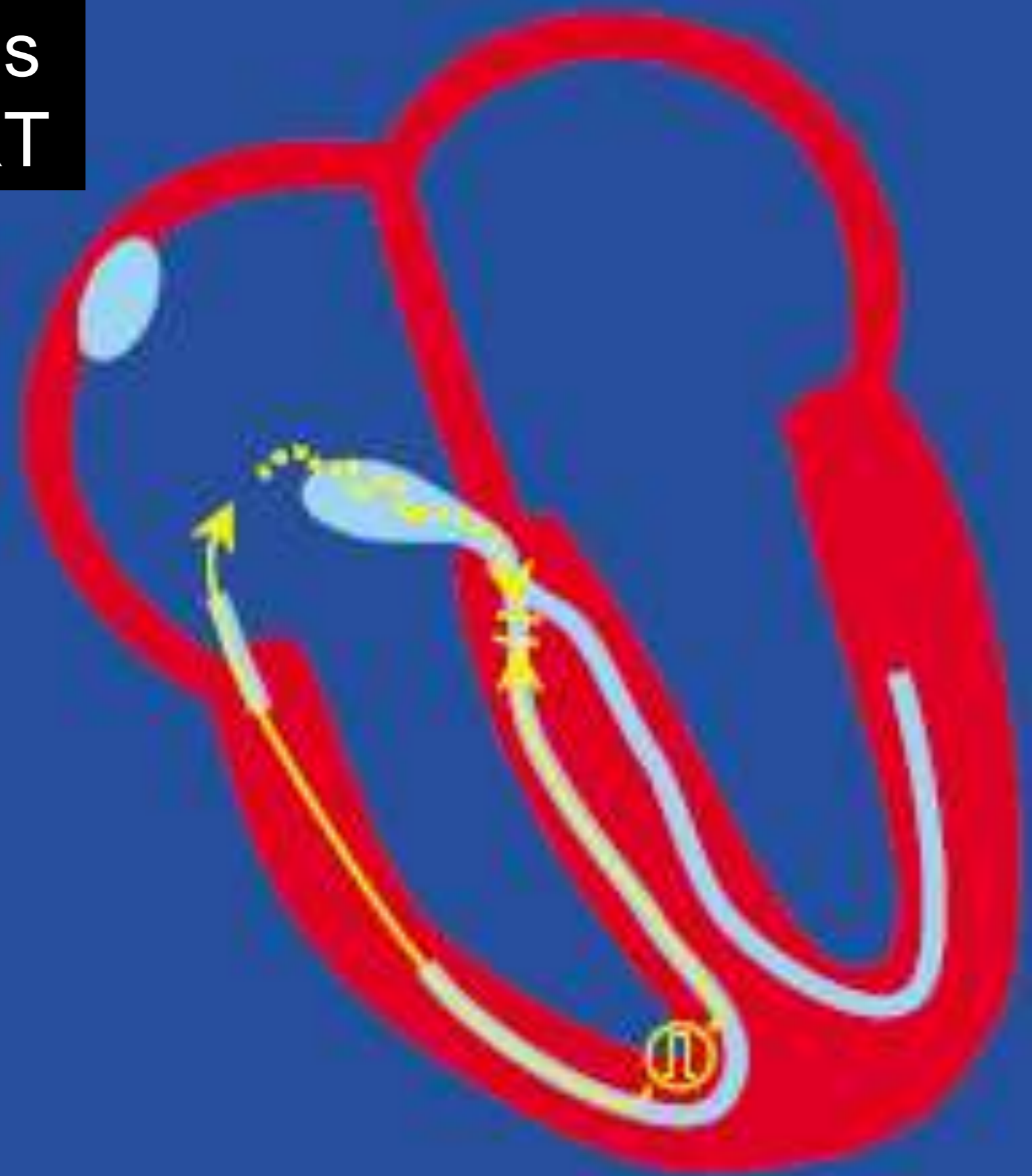
Single Sensed PVCs

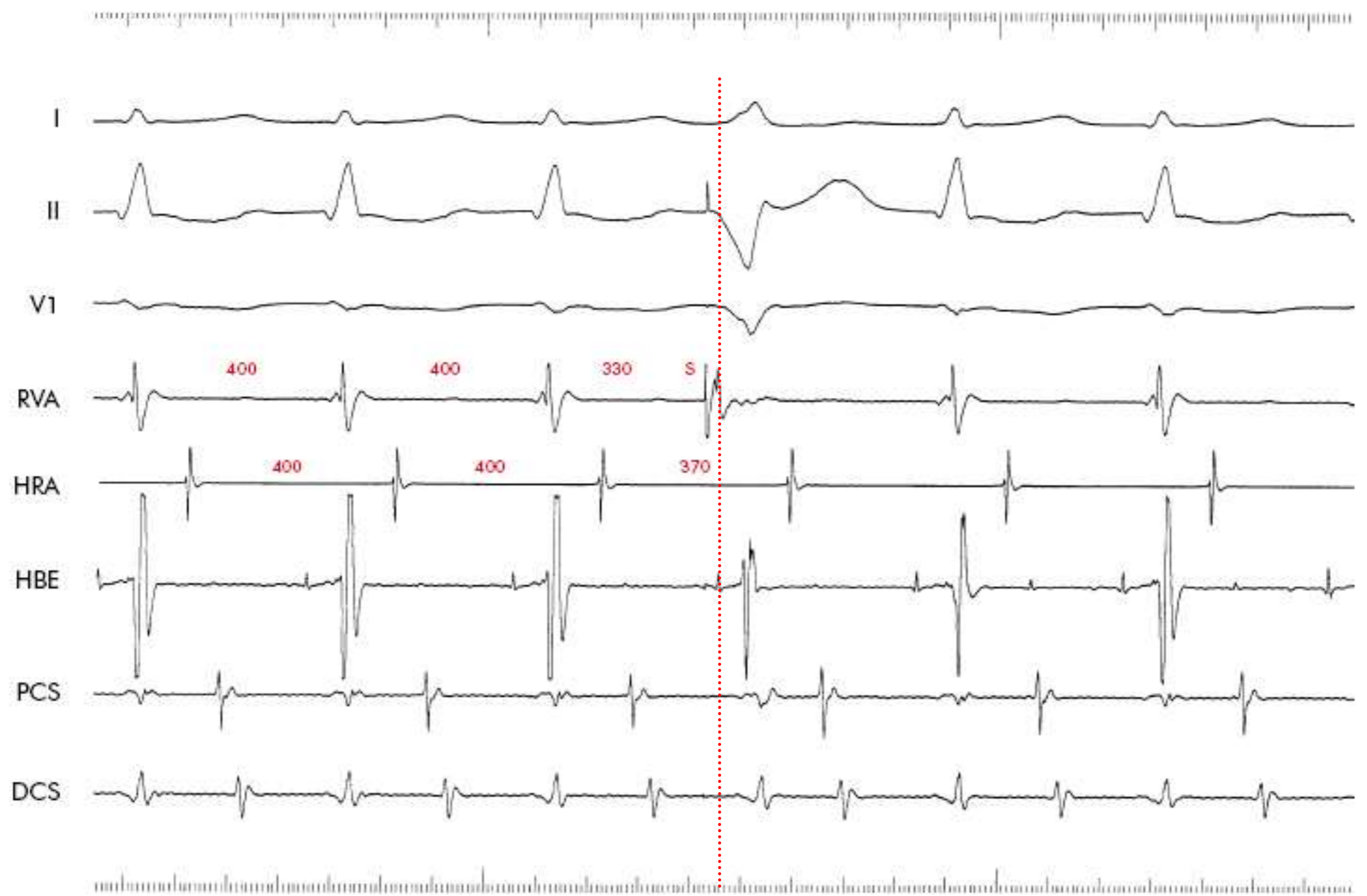
- The aim is to pace the ventricle synchronous with His activation
- At this time the His-Purkinje system is refractory to retrograde conduction
- Any change in cycle length of A would indicate the presence of another connection between V and A other than the AV node

RV apical
pacing with
retrograde
over AV node



His synchronous PVC in AVRT



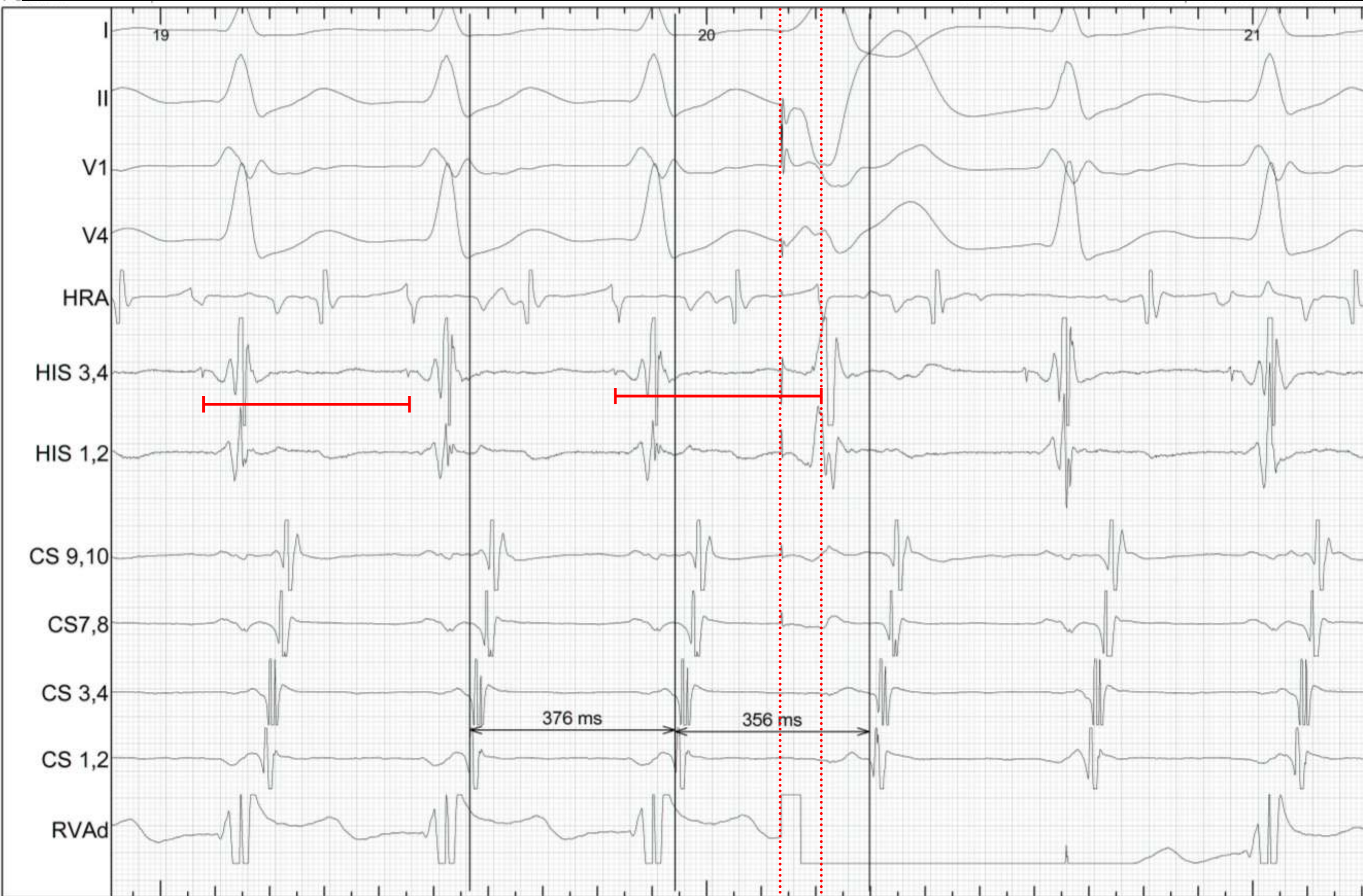


Sensed PVC
in AVRT with
left lateral AP



PVC in AVRT with left lateral AP.

PVC has to be delivered 90ms pre His in order to advance A



Termination of tachy with PVC that does not conduct to A – proves AVRT

Page 2
I ARRHYTHM



His Synchronous PVC

- In general this does show that you have AVRT and an accessory pathway
- However be aware that bringing the next A signal forward is not 100% proof of this (bystander pathways)

His synchronous PVC in AVNRT to show earliest A retrograde

Pat

